

In-Sn (Indium-Tin)

H. Okamoto

The In-Sn phase diagram in [Massalski2] was adopted from [1992Oka] (dashed lines in Fig. 1).

Solid lines in Fig. 1 show the In-Sn phase diagram calculated in the most recent thermodynamic assessment by [2004Dav]. The low-temperature part of this phase diagram has not been analyzed thermodynamically.

References

1992Oka: H. Okamoto, In-Sn (Indium-Tin), *Phase Diagrams of Indium Alloys and Their Engineering Applications*, C.E.T. White and H. Okamoto, Ed., ASM International, 1992, p 255-257

2004Dav: N. David, K. El Aissaoui, J.M. Fiorani, J. Hertz, and M. Vilasi, Thermodynamic Optimization of the In-Pb-Sn System Based on New Evaluations of the Binary Borders In-Pb and In-Sn, *Thermochim. Acta*, 2004, **413**, p 127-137

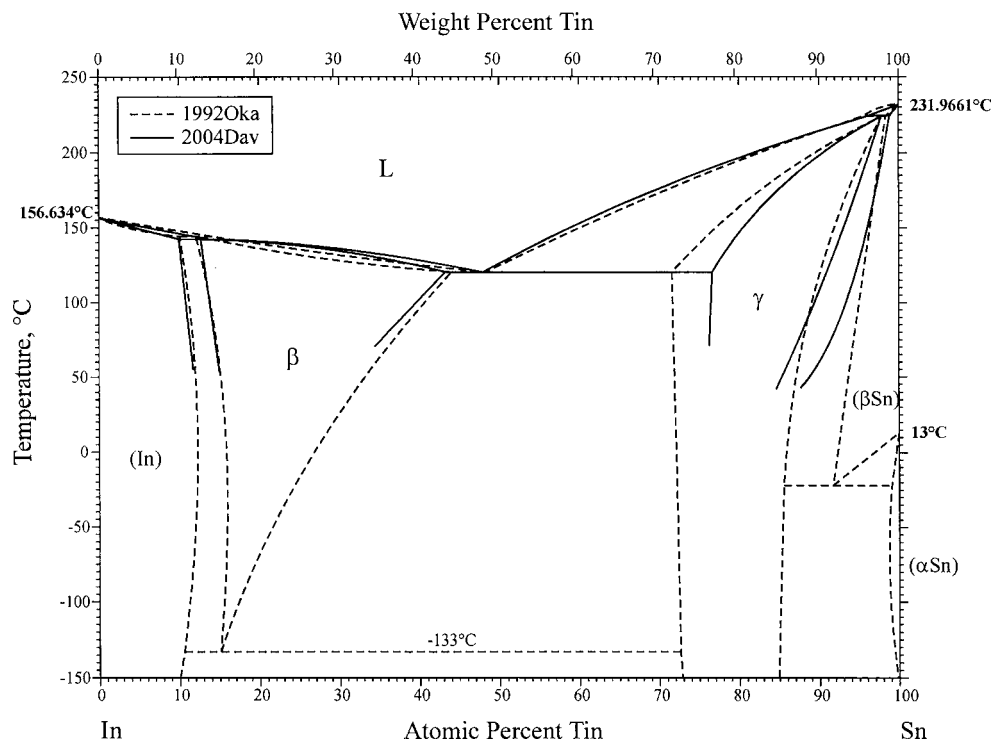


Fig. 1 In-Sn phase diagram